

## NCFE Level 1 Functional Skills Qualification in English (603/5058/1)

### NCFE Level 1 Functional Skills Qualification in English: Reading

Paper Number: **P002115**

Time Allowed: **1 hour**

#### Learner instructions

- Use black or blue ink.
- Answer **all** questions.
- Read **each** question carefully.
- Write your responses in the spaces provided.
- All of the work you submit **must** be your own.

#### Learner information

- The marks available for each question are shown in brackets.
- The maximum mark for this paper is 30.
- The use of a dictionary is permitted.

**Do not turn over until the invigilator tells you to do so.**

**Please complete / check your details below**

**Learner Name:**

**Centre Name:**

**Learner Number:**

**Centre Number:**

# SALTSHED NEWS

## Box-B: restaurant write-up

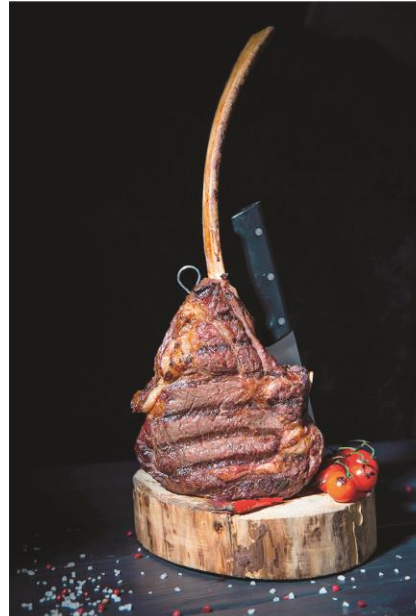
Mark Naylor

**Meal for two, including drinks and service:  
around £48**

Quitting well-paid jobs in the City to follow a dream may seem mad, but for the owners of Box-B in Saltshhead it was the start of an amazing journey.

Glenn Parton and Carrie Evans started talking about opening their own place back in 2018. They never really believed that their plan might one day come true. The school friends decided that the time had come to see if they had what it takes to open a successful restaurant. They toured across the southern states of America determined to become barbecue gurus. Six months later they were back, having eaten their way across the continent.

'If there's one thing the Americans know how to do, it's cook beef,' laughs Evans. 'We ate steak in fifteen states and every meal was mind-blowing.'



Back in the UK they needed a place to stay and friends offered them the use of a caravan on the south coast. The local pub was struggling to find staff which provided Parton and Evans with the perfect opportunity. They dug a pit in the pub garden, stuck a grill on it and started to practise their recipes. Their food was instantly a big hit with the tourists.

Pop-up events were a natural next step, so the following summer the couple spent every weekend at a different festival.

'We were having a great time,' Parton explains. 'But we needed to establish some roots and build a reputation somewhere permanent.'

In 2020 they took the plunge and opened a bricks and mortar restaurant. 'The timing stank but somehow we've survived,' Parton and Evans comment. 'The area had suffered from high unemployment but the locals were ready for something new.'

Box-B won Best Restaurant in the South West last week and it's easy to see why. They are fast gaining a reputation as the best place to go to for quality ingredients cooked 'low and slow'. Putting passion on a plate seems to be working. Customers are queuing up to try this genuine Southern soul food.

'It's a riches to rags story,' the friends joke. 'Before, we were bored of the 9-5, but now we can honestly say we've never been happier.'

## Section 1

The questions in this section refer to Document 1.

This section has a possible **14 marks** available.

Answer **all** questions in the spaces provided.

- 1** How long did Glenn Parton and Carrie Evans spend travelling around America?

[1 mark]

---

---

- 2** One of the purposes of Document 1 is to explain why Parton and Evans decided to leave their 'well-paid jobs in the City'. Give **two** quotations to support this.

[2 marks]

---

---

---

---

- 3** Document 1 contains a photograph. What information can you infer from the photograph that is **not** written in the text?

[1 mark]

---

---

- 4 Identify whether **each** of the following statements from Document 1 is a **fact** or an **opinion**.

[2 marks]

Statement	Fact or Opinion
'If there's one thing the Americans know how to do, it's cook beef...'	
'We ate steak in fifteen states...'	

- 5 What does the word 'Pop-up' mean, as used in the phrase 'Pop-up events'?

[1 mark]

.....

.....

- 6 Document 1 contains informal language. Give **two** words or phrases to show this.

[2 marks]

.....

.....

.....

.....

- 7 Why has Mark Naylor used speech marks at various points in Document 1?

[1 mark]

.....

.....

- 8** Identify **two** places where Evans and Parton sold their food before opening the Box-B restaurant.

**[2 marks]**

---

---

---

---

- 9** What organisational feature is used to suggest how much a meal at Box-B might cost?

**[1 mark]**

---

---

- 10** The writer says that 'Customers are queuing up to try this genuine Southern soul food.' What does the word 'genuine' mean?

You may use a dictionary to answer this question.

**[1 mark]**

---

---

**Please turn over for Section 2.**

## Document 2

[← →](#) [🏠](#) [🔄](#) [🔒 www.box-b.biz](#)

[Our Story](#) [Contact Us](#) [Job Search](#)

Are you interested in

# JOINING OUR TEAM?

We currently have vacancies available



### Why work with us?

You may have heard that we serve the best barbecued food in the whole of the south west, or that we're an award-winning restaurant just starting to make a name for itself. Maybe you've heard about our friendly welcome. It's our team members that make us really special and we want YOU to help us make every customer's visit memorable.

Box-B is the perfect place to have a flexible job or a long-term career. We will offer you exciting opportunities from the moment you join us. Specialised training and a varied package of benefits make us the right choice for your next employment decision. We have everything you need to ensure you succeed in hospitality. So, if you want to work for an employer where you feel supported, recognised and rewarded, apply to Box-B today!

### Some of our benefits



Staff discount  
We love our food and we want you to enjoy it too. You'll receive a free meal every time you work a 4-hour shift. Plus, you'll get a 33% discount for you and up to five friends every time you dine with us.



Pension plan  
Retirement may be a long way off, but we offer a pension plan that helps you to save for the future. You get up to 6% employer contribution (role dependent).



Refer a friend  
We know you're going to love working with us. If you recommend a friend you'll receive up to £1000 as a signing bonus when they complete their first 6 months.

### A world of opportunities



Dan joined us when we opened our first permanent site in 2020 as an apprentice. Since then he's been promoted 3 times in 18 months – something we think is worth shouting about. We offered Dan the opportunity to take a Level 2 Food and Production course which he jumped at. The skills he gained gave him the confidence to manage a team and last month he became our new Kitchen Manager. Just think where a career with Box-B could take you. The sky's the limit!

### Current vacancies

<b>Box-B Kitchen Porter</b> <b>Salary:</b> Competitive <b>Hours:</b> Full time <b>APPLY</b>	<b>Box-B Waiting Staff</b> <b>Salary:</b> Competitive <b>Hours:</b> Weekends only <b>APPLY</b>	<b>Box-B Chef</b> <b>Salary:</b> Competitive <b>Hours:</b> Part time <b>APPLY</b>
--	---	--

## Section 2

The questions in this section refer to Document 2.

This section has a possible **13 marks** available.

Answer **all** questions in the spaces provided.

- 11** Read these **two** statements from Document 2. Identify whether **each** one is an example of **explanatory** or **persuasive** language.

[2 marks]

Statement	Explanatory or Persuasive
'We will offer you exciting opportunities from the moment you join us.'	
'You'll receive a free meal every time you work a 4-hour shift.'	

- 12** a) Which job at Box-B would suit someone in full time education?

[1 mark]

.....

.....

- b) What is Dan's job at Box-B?

[1 mark]

.....

.....

**13** In Document 2, the writer uses language features to present ideas. Identify the language feature used in **each** of the following quotations:

a) 'You may have heard that we serve the best barbecued food in the whole of the south west...'

**[1 mark]**

---

---

b) 'So, if you want to work for an employer where you feel supported, recognised and rewarded...'

**[1 mark]**

---

---

**14** Dan has been 'promoted 3 times in 18 months.' What does the word 'promoted' mean in this context?

**[1 mark]**

---

---

**15** a) What organisational feature is used to show how to get in touch with Box-B?

**[1 mark]**

---

---

b) Which section outlines the perks available to employees?

**[1 mark]**

---

---



- 16 Using Document 2, identify whether **each** of the following statements is **true** or **false**.

[2 marks]

Statement	True or False
You can bring as many friends with you as you like to the restaurant to share your staff discount.	
Dan was keen to study the Level 2 Food and Production course.	

- 17 Give **one** word that could be used to replace the word 'permanent', as used in the final paragraph.

You may use a dictionary to answer this question.

[1 mark]

.....

.....

- 18 There is a chart at the top of Document 2. What information can you infer from the chart that is **not** written in the text?

[1 mark]

.....

.....

**Please turn over for Section 3.**

### Section 3

The question in this section refers to **both** Document 1 and Document 2.

This section has a possible **3 marks** available.

Answer the question in the space provided.

- 19** Compare the information, ideas and opinions given in Document 1 about the restaurant Box-B, with what is said about it in Document 2.

**[3 marks]**

.....

.....

.....

.....

.....

.....

.....

.....

.....

.....

.....

.....

.....

.....

.....

.....

.....

.....

.....

.....

.....

**[Total: 30 marks]**

**This is the end of the external assessment.**

**This page is intentionally left blank.**

To be completed by the examiner	Mark
Section 1	/ 14
Section 2	/ 13
Section 3	/ 3
TOTAL MARK	/ 30

past paper